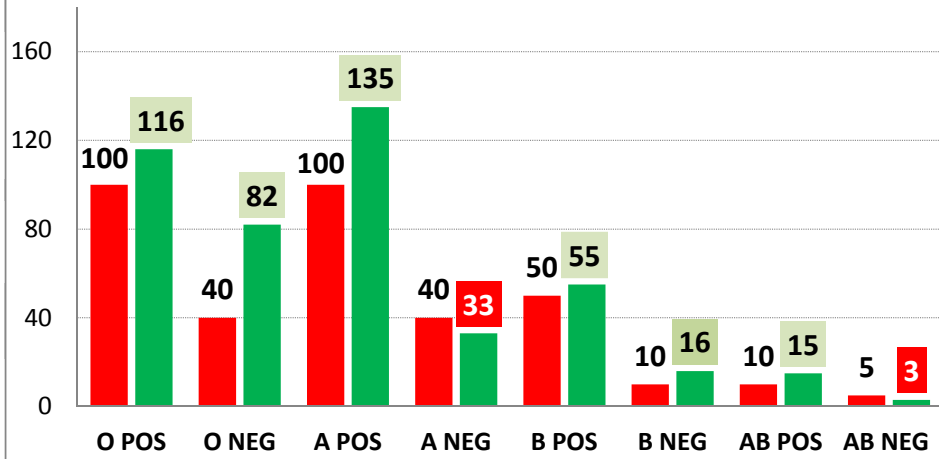


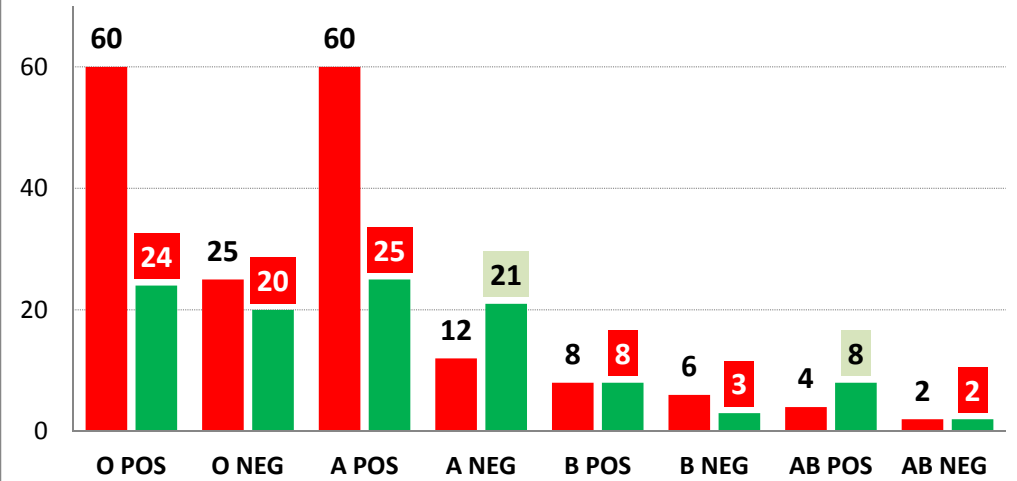
SIT PERUGIA

■ SCORTE MIN ■ SCORTE 09 09 20



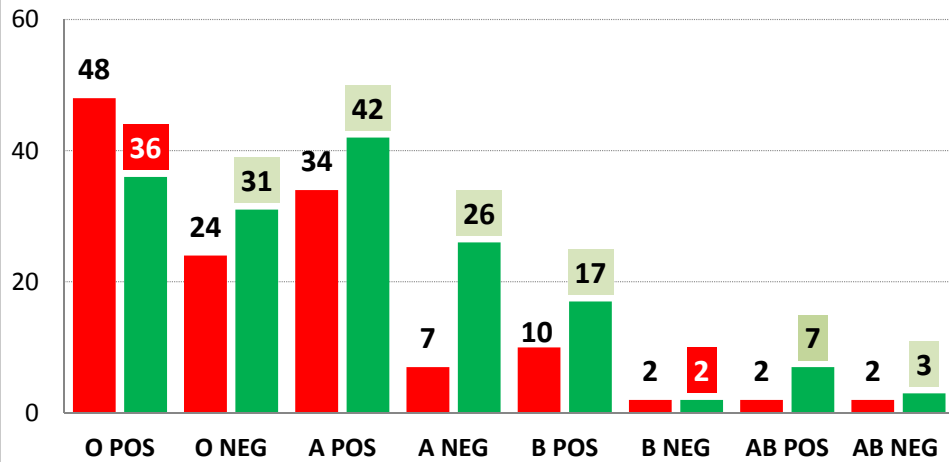
SIT TERNI

■ SCORTE MIN ■ SCORTE 09 09 20



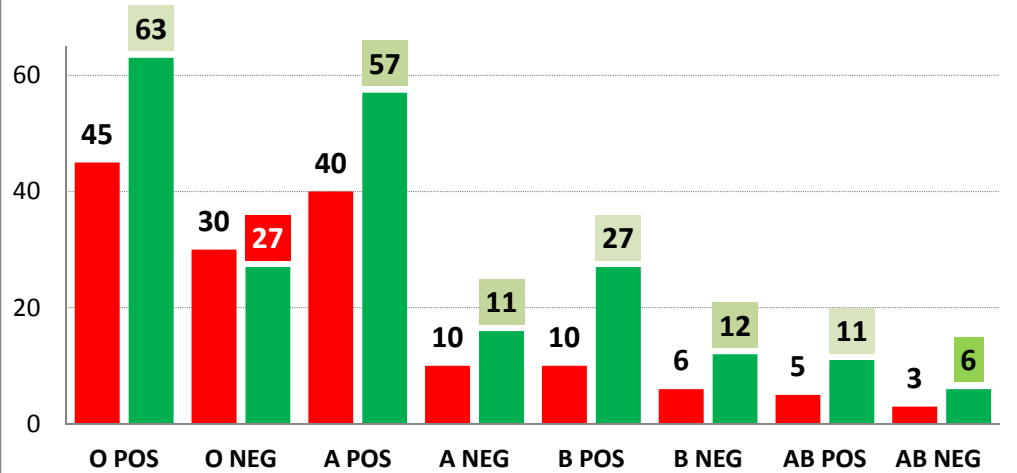
SIT FOLIGNO

■ SCORTE MIN ■ SCORTE 09 09 20



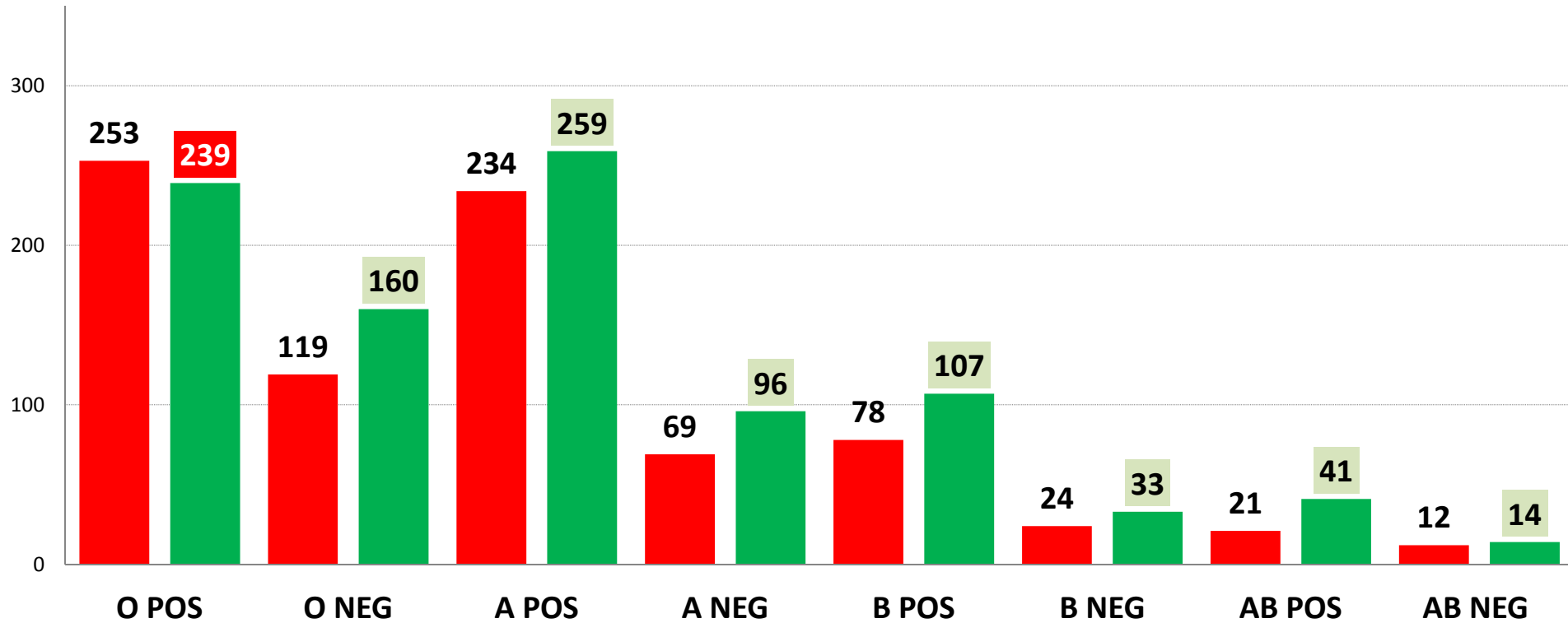
SIT C_CASTELLO

■ SCORTE MIN ■ SCORTE 09 09 20



CRS UMBRIA

■ SOGLIE MINIME ■ SCORTE AL 09.09 2020

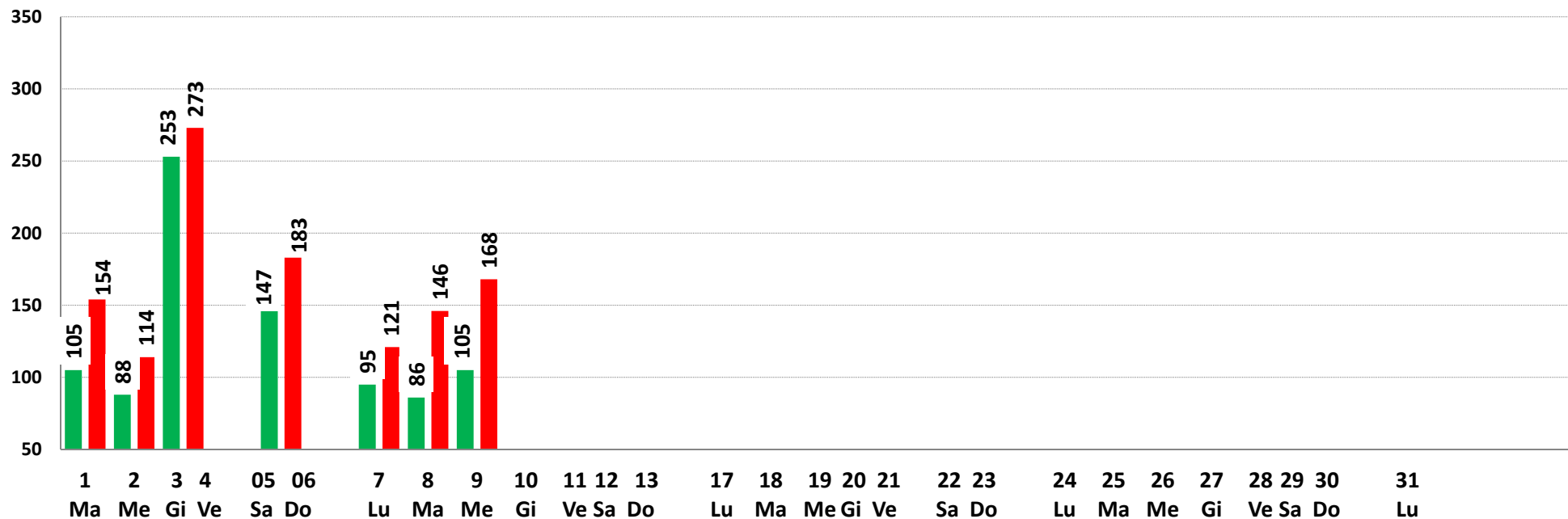


*

nelle scorte sono ricomprese le unità già assegnate che rappresentano il 30% circa delle giacenze

CRS UMBRIA - SETTEMBRE 2020

■ PRODOTTE ■ TRASFUSE



CRS UMBRIA - CONSUMI MEDI PREVISTI x GG								
O POS	O NEG	A POS	A NEG	B POS	B NEG	AB POS	AB NEG	
44,29%	8,57%	31,43%	2,86%	7,86%	2,86%	2,14%	0,00%	
62	12	44	4	11	4	3	0	140

POS	NEG	MEDIA TRASFUSE 01 - 09 09 20	TOT
85,71%	14,29%	129	1.159
		98	879